

St Matthew's Giroscope Community Enterprise Centre





Photo by Octovision Ltd.

ABOUT ST MATTHEW'S

St Matthew's Community Enterprise Centre is an aspirational enterprise and community centre in the heart of HU3.

This historic Victorian, Grade II listed building has been transformed into a breathtaking, multifunctional space. A light touch design approach retains the original church features as the main focal points with subtle contemporary additions.

The centre offers a stylish first floor mezzanine of offices and meeting rooms with the latest audiovisual and conferencing facilities. On the ground floor, the central Nave and Chancel offer unique event, meeting and conference areas framed within the stone columns and spectacular stained glass windows.

HISTORY

St Matthew's Church (1870) is a major Hull landmark adjacent to the Anlaby Road flyover. It boasts the tallest broach spire in Hull, which can be seen from far and wide. Built of creamy white and red brick in an Early English style, it is the oldest and largest of the three remaining Victorian Anglican church buildings in Hull, designed by Adams and Kelly. The newly restored WWI memorial stained glass West Window, originally installed in 1922, features a soldier and sailor commemorating the 138 local men lost in the Great War.

After 150 years of serving its congregation, the church closed in 2013. In 2018, Giroscope purchased St Matthew's. Radical pioneers of the self-help housing movement, the charity's ambitious renovation is testament to its core DIY approach, involving its workforce, volunteers and partners to breathe new life into this important building.



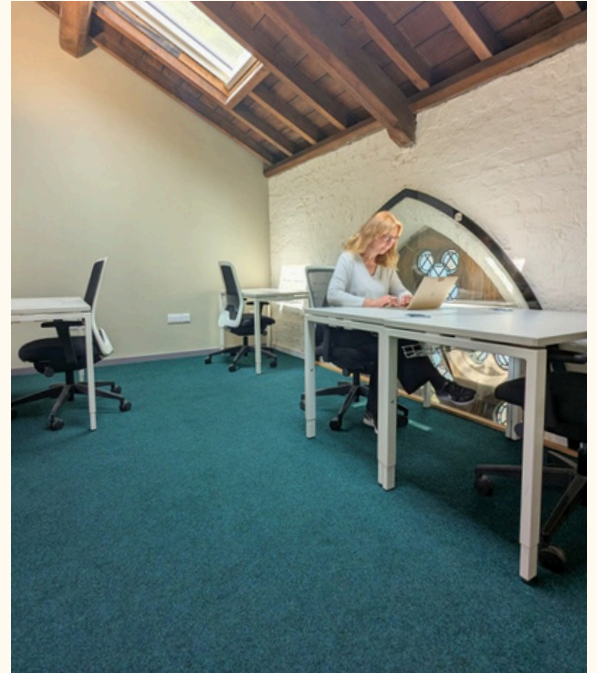


WORKSPACE AND BUSINESS SUPPORT

Whether you are a start-up or established business, we offer a range of permanent and flexible office or co-working membership packages for you.

We particularly welcome applications from social enterprise, local enterprise and businesses with a strong social value agenda.

CO-WORKING SPACE & OFFICE ROOMS



On our first floor are six exclusive office spaces with private access. On the ground floor, a stylish open plan arrangement of co-working desks is available.

- Managed workspace with reception
- Hi-speed wifi and utilities
- Communal kitchen
- Unlimited filter coffee, tea and fresh fruit
- Free on-street parking and bicycle storage
- Dedicated business support, workshops, events & networking
- Discounts on meeting rooms & event spaces
- Leisure facilities; library, table tennis and pool tables
- A supportive business community

MEMBERSHIP BENEFITS

Most importantly, members are part of our Giroscope family; projects, services, expertise, partner and supplier networks.



ROOM HIRE AND EVENTS

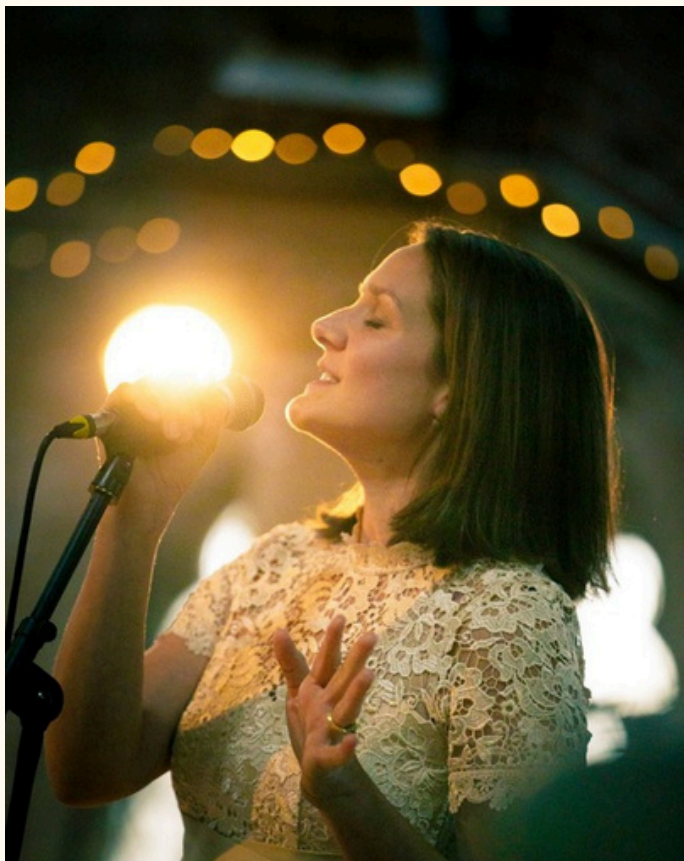


Photo by Mark Kensett



St Matthew's boasts a collection of stylish rooms to hire for all event types, business and community.

Practical elements include:

A communal kitchen with serving hatch, tea and coffee facilities for groups, audio visual equipment, including an 110" large screen and rear projector, zoned audio speaker system and microphones. Delicious catering is also available from our cookery project.

To enquire, email
stmatthews@giroscope.org.uk



THE NAVE



Photo by Octovision Ltd.

A dramatic space for business and community events, from knowledge exchanges to conferences. Overlooked by beautiful stained glass, stone carvings, columns and pitch pine beamed roof.

The Nave accommodates up to 200 people and may be adapted for conferences and celebrations, business events and banquets, theatrical performances, concerts and more.

Facilities: 110" screen with rear projector, zoned speakers & microphones.

THE CONFERENCE ROOM



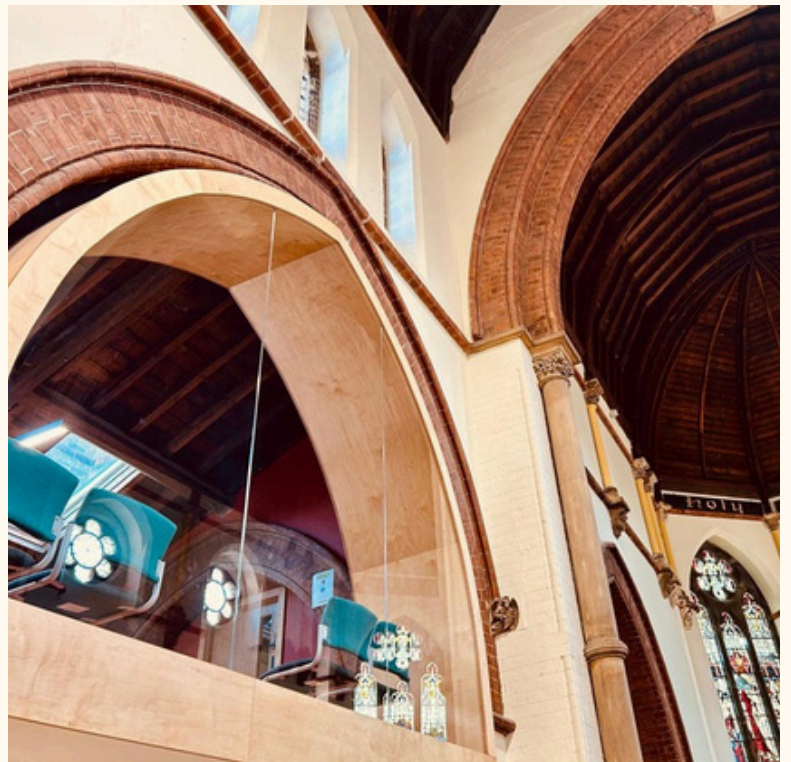
Watch a buzz of activity from on high in our showstopping conference room.

Pale birch arches frame top to floor glass panels, which look out over the beautiful interior. Inside, hi-tech meets heritage where stained glass windows of doves watch over as you avail of the latest AV equipment for your meeting.

The conference room will accommodate 20 to 30 people. It is an ideal choice for any business occasion, from training sessions and presentations to boardroom meetings.

Facilities:

High performance 68" screen with Teams Rooms Video conferencing, flip chart, bottled water and tea/coffee station.



THE VESTRY



A warm, timber floored welcoming space edged with ornate carved Victorian wood panels and glass.

The Vestry is a more informal place for community groups and businesses, the perfect room for smaller meetings of 8 - 12 (up to 20 theatre style).

This beautiful room also leads out to a secret decking area, a sunny spot for outdoor breaks.

Equipment: Portable 68" screen with camera and soundbar.





Thanks to our funders & supporters



Funded by
the European Union



Funded by
UK Government



The Sir James Reckitt Charity

ST MATTHEWS COMMUNITY ENTERPRISE CENTRE


ROOM HIRE RATES

	Full Nave (incl side aisles)	Central Nave (excluding side aisles)	Half Nave	Conference Room	Vestry
Size	250 sqm	170 sqm	85 sqm	30 sqm	20 sqm
Layout (no of people)					
Banquet	120	90-100	50	n/a	n/a
Theatre	n/a	180	100	40	20
Boardroom	n/a	n/a	on request	22	8-10
Rates					
Full day	£720.00	£480.00	£400.00	£360.00	£180.00
Half day or evening	£400.00	£260.00	£220.00	£200.00	£100.00
Additional hour	£150.00	£100.00	£85.00	£75.00	£35.00
Services					
Screen/Projector	Included	Included	Included	Included	Included
Conferencing	Included (on request)	Included (on request)	Included (on request)	Included	Included
Microphone/audio	Included	Included	Included	n/a	n/a
Flipchart/pad & pens	Included (on request)	Included (on request)	Included (on request)	Included (on request)	Included (on request)
Refreshments	Included	Included	Included	Included	Included

Non profit & community organisations: 25% discount

For discounts on multiple and/or regular room bookings and collaborative events, please contact stmatthews@giroscope.org.uk



 @giroscope_hull